

BellaTek® IOS & The Sirona Connect System Clinician Procedure



Fig. 1

Surgeon

(Please ensure that these instructions are forwarded to the restorative clinician.)

STEP 1: Select a BellaTek® Encode® Healing Abutment with the appropriate restorative platform diameter, Emergence Profile (EP®) and collar height (Fig. 1).

NOTE: Use **tall** BellaTek Encode Healing Abutments to ensure that the height of the abutment collar, not including the domed occlusal portion, will extend 2.0mm above the soft tissue (1.0mm minimum) on all sides for proper impressing and subsequent scanning. Use **wide** BellaTek Encode Healing Abutments to ensure that the definitive abutment will seat easily without excessive blanching of the tissue.

STEP 2: Place the BellaTek Encode Healing Abutment. Confirm that the BellaTek Encode Healing Abutment is fully seated on the implant by taking a radiograph. BellaTek Encode Healing Abutments have a two-piece design. The body of the healing abutment engages the hex connection of the implant. Bone profiling may be required to fully seat the healing abutment. The BellaTek Encode Healing Abutment Screw should be torqued to 20Ncm using the Large Hex Driver Tip. Suture the tissue around the BellaTek Encode Healing Abutment and allow the tissue to completely heal.

Scanning Clinician

STEP 1: After tissue maturation, the BellaTek Encode Healing Abutment is ready for digital impressing. Ensure that the abutment is fully seated on the implant by taking a radiograph. The height of the abutment collar, not including the domed occlusal portion, should extend 2.0mm above the soft tissue (1.0mm minimum) on all sides.

STEP 2: Hand-tighten the abutment before impressing.

Setting up Sirona Connect

If you are not registered on Sirona Connect:

STEP 1: Download the CEREC Connect Software (Fig. 2):
<http://www.sirona-connect.com>.

NOTE: On your first visit, you will be asked to change the language of the Sirona Connect website to your preferred language.

STEP 2: Register on the Sirona Connect Homepage via Dentist Registration. Follow the instructions on the screen.

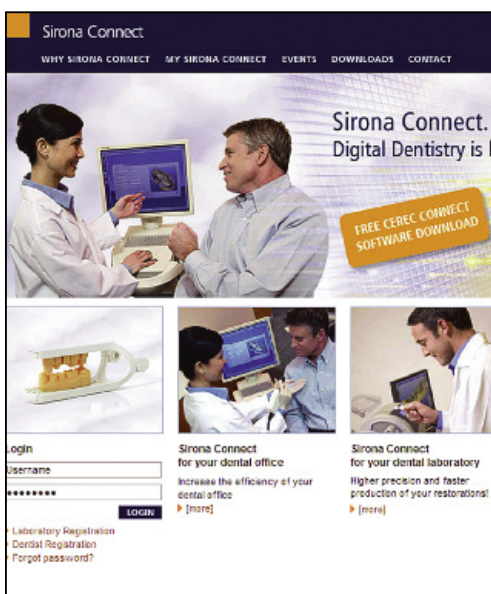


Fig. 2

BellaTek® IOS & The Sirona Connect System

Clinician Procedure (Cont'd)

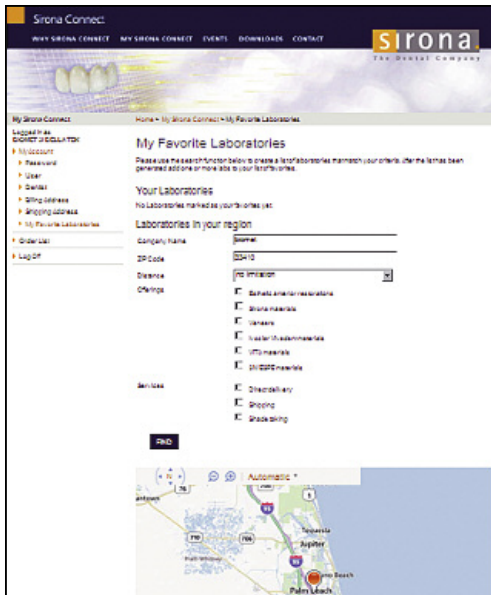


Fig. 3

STEP 3: Setting up BIOMET 3i™ as a laboratory on Sirona Connect (Fig. 3).

- Log into your account on the Sirona Connect homepage.
- Click “my favorite labs”.
- Type “BIOMET” as the company name, delete the preset zip code and then click “Search”.
- Results will show an entry “BIOMET 3i PSP”. Click “Add” to add BIOMET 3i to your laboratories.



Fig. 4

Workflow for a BellaTek® Encode® Case

STEP 1: Creating the case – Phase “Administration” (Fig. 4).

- Open your CEREC Connect Software.
- Create a patient and a case.
- Select the teeth to restore.
- Select “Single Tooth Restoration”.
- On the next screen, select “crown” and “fully anatomical crown”.
- Click material selection.
- Proceed to phase “Scan”.

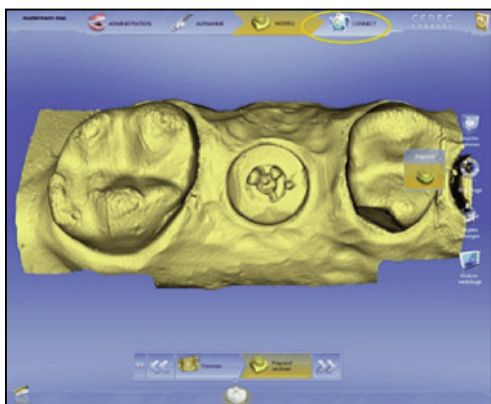


Fig. 5

STEP 2: Scan the BellaTek Encode Healing Abutment – Phase “Acquisition” (Fig. 5).

- Scan the healing abutment.
- Proceed to step “CONNECT”.

BellaTek® IOS & The Sirona Connect System Clinician Procedure (Cont'd)

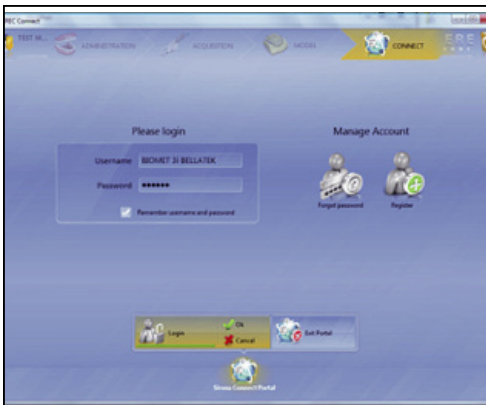


Fig. 6

STEP 3: Create the BellaTek® Encode® Work Order – Phase “Connect”.

- Sign into the system with your Sirona Connect login data (Fig. 6).



Fig. 7

- The patient data will be uploaded automatically (Fig. 7).
- Click "Enter Order Data".
- Select "BIOMET 3i PSP" as the laboratory.
- Choose the preferred delivery date. Calculate six working days for delivery of titanium and eight working days for zirconia abutments.
- Click "Add additional information".
- Open Windows Explorer by pressing Windows + E keys. Please leave Sirona Connect running in the background.

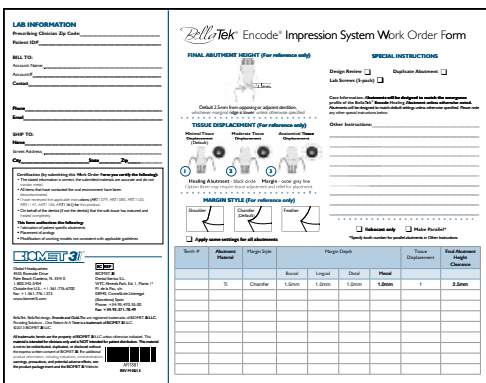


Fig. 8

- Go to the BIOMET 3i BellaTek Encode Work Order Form template <http://encodeworkorder.biomet3i.com> (Fig. 8).
NOTE: It is suggested to create a central folder for this file, allowing you quick access.
- Fill in the Work Order Form. Please be aware that due to the full digital process, Robocast models and duplicate abutments will not be available.
- Save the form.

BellaTek[®] IOS & The Sirona Connect System

Clinician Procedure (Cont'd)



Fig. 9

- Return to the Sirona Connect Portal (Fig. 9).
- Click "Additional Files" and upload the **BIOMET 3i** BellaTek[®] Encode[®] Work Order Form.
- Use the "Additional Instructions" text field to provide additional information.



Fig. 10

- Click "Add to cart" to go to the cart screen. Here you can review your work order and checkout (Fig. 10).
- You have to type in your login credentials.
- Click "Send cart" to finish the ordering process.
- You can now close the portal.

STEP 4: Production and delivery of the BellaTek Encode Abutment

- You should receive an order confirmation email from BIOMET **3i** within 24 hours (business day).
- If you have not received an order confirmation email within 48 hours, please contact us as stated on the last page.
- Within 48 hours of receiving your order confirmation, you will receive a design that you will have to confirm. If you need design changes, please contact BIOMET **3i** as stated in the email.
- After you have confirmed the design, BIOMET **3i** will produce and ship the abutment.

STEP 5: Seat the final BellaTek Encode Abutment

- BellaTek Encode Healing Abutments have a two-piece design. First, remove the BellaTek Encode Healing Abutment Screw using the Large Hex Driver. The body of the BellaTek Encode Healing Abutment can then be removed by pulling it from the implant (Fig. 11).



Fig. 11

NOTE: BellaTek Abutments and components are not sterile when delivered. Autoclave prior to patient use. Steam autoclave sterilize in a single pouch for a minimum of 20 minutes at a temperature of 270° - 275°F (132° - 135°C).

BellaTek® IOS & The Sirona Connect System

Clinician Procedure (Cont'd)



Fig. 12

For Certain® Internal Connections:

Activate the fingers on the BellaTek® Abutment using the QuickSeat® Activator Tool. Locate the tooth number on the buccal aspect of the abutment to orient the abutment position. Place the definitive BellaTek Abutment into the implant, line up the hex and press until feeling the tactile click. Thread a Certain Gold-Tite® Hexed Screw into the implant until finger tight. Radiograph the interface to verify an accurate fit.

For External Hex Connections:

Locate the tooth number on the buccal aspect of the abutment to orient the abutment position. Place the definitive BellaTek Abutment onto the implant, engaging the hex. Thread a Square Gold-Tite Screw into the implant until finger tight. Radiograph the interface to verify an accurate fit.

NOTE: If there is not enough space to create a number, a line will be placed on the buccal surface of the definitive BellaTek Abutment for orientation purposes.



Fig. 13

STEP 6: Scan the final BellaTek Abutment

- Scan the abutment intraorally to create the final restoration (Fig. 12).
- Please use, depending on your scenario, either CEREC software (if you want to produce the restoration on your own), or the CEREC Connect software (if you would like a laboratory to produce your restoration).
- Once the restoration is completed, try in the restoration on the definitive BellaTek Abutment and check the occlusion, marginal fit and interproximal contacts. Make adjustments as necessary (Fig. 13).

BellaTek® IOS & The Sirona Connect System

Clinician Procedure (Cont'd)



Fig. 14

For Certain® Internal Connections:

Torque the Certain Gold-Tite® Screw to 20Ncm using the Large Hex Driver Tip and a torque device.

For External Hex Connections:

Torque the Square Gold-Tite Screw to 32–35Ncm using the Square Driver Tip and a torque device.

- Place protective material over the screw head. Seal the access hole with temporary filling material. Cement the restoration on the definitive BellaTek® Abutment using temporary or permanent cement (Fig. 14).



BIOMET 3i
4555 Riverside Drive
Palm Beach Gardens, FL 33410
1-800-342-5454
Outside The U.S.: +1-561-776-6700
Fax: +1-561-776-1272
www.biomet3i.com



BIOMET 3i
Dental Iberica S.L.
WTC Almeda Park, Ed. I, Planta 1ª
Pl. de la Pau, s/n
08940, Cornellà de Llobregat
(Barcelona) Spain
Phone: +34-93-470-55-00
Fax: +34-93-371-78-49



Join Us



Follow Us



Watch Us



Download It

All trademarks herein are the property of BIOMET 3i LLC unless otherwise indicated. This material is intended for clinicians only and is NOT intended for patient distribution. This material is not to be redistributed, duplicated, or disclosed without the express written consent of BIOMET 3i. For additional product information, including indications, contraindications, warnings, precautions, and potential adverse effects, see the product package insert and the BIOMET 3i Website.

BellaTek, BellaTek design, Certain, Encode, EP, Gold-Tite and QuickSeat are registered trademarks of BIOMET 3i LLC. Providing Solutions – One Patient At A Time is a trademark of BIOMET 3i LLC. ©2013 BIOMET 3i LLC.



INST1147
REV A 06/14